

# **Photron *FASTCAM* Viewer**

*for High Speed Digital Imaging*



## **Release Notes**

---

**(Ver.3.6.0)**

**Photron**

# Table of Contents

## Photron FASTCAM Viewer Release Notes (Ver.3.6.0)

<b>Chapter.1</b>	<b>Release Summary</b>	<b>1</b>
1.1.	PFV Ver.3.6.0 Summary .....	2
<b>Chapter.2</b>	<b>New Function and Operation</b>	<b>3</b>
2.1.	PFV Ver.3.6.0 Additional Function.....	4
2.1.1.	SDK – Change of development environment .....	4
2.1.2.	Application functionality for network configuration.....	4
<b>Chapter.3</b>	<b>The Contents of Bug Fix</b>	<b>7</b>
3.1.	PFV Ver.3.6.0 Fixed bugs .....	8

# Chapter.1 Release Summary

---

The following describes the release summary.

## 1.1. PFV Ver.3.6.0 Summary

---

The PFV Ver.3.6.0 is now compatible with FASTCAM Mini AX100 and FASTCAM Mini AX50, the latest models of the FASTCAM Mini-series. Now you can enjoy, in your shooting and image analysis activities, the great features of compactness, high sensitivity and high image quality of the Mini AX100/50 models that were not available with the previous models.

Also, a new application for automatic configuration and optimization of your PC network for controlling the high-speed cameras has been added. This user-friendly functionality allows any users, including those beginners who are to use a high-speed camera for the first time, to easily optimize the PC network configuration.

With all the above functionalities incorporated, the attached PFA has turned to a new version number, that is, Ver.1.3.0. This requires the license for the PFA to be activated with the latest activation key that is compatible with this new version. You are kindly advised to install the latest version PFA as necessary.

As noted earlier, the development environment has been changed to Visual Studio 2013 from this version. If you have been using the NI DAQ Plug-in, YMI DAQ Plug-in and Graphtec DAQ Plug-in, even though there is no difference in the operation method of the software from that for the previous version, it is necessary to replace your Plug-ins with ones that are compatible with Visual Studio 2013. The new version numbers for such Plug-ins, compatible with Visual Studio 2013, are as follows:

NI DAQ Plug-in: Ver. 2.0.0  
YMI DAQ Plug-in: Ver. 2.0.0  
Graphtec DAQ Plug-in: Ver. 2.0.0

In addition, some of the known bugs have been fixed for your more efficient operation experience.

With all the above new features and bug fixes incorporated in the latest version PFV, combined with your FASTCAM high-speed camera(s), you will enjoy comfortable operation and satisfactory end results in your applications.

# Chapter.2 New Function and Operation

---

The following describes the new function and the operation.

## 2.1. PFV Ver.3.6.0 Additional Function

### 2.1.1. SDK – Change of development environment

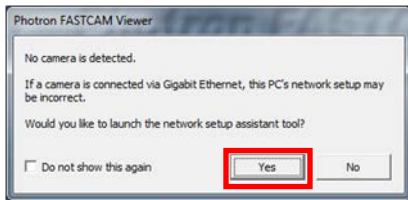
The development environment for SDK has been changed to Visual Studio 2013. As a result, the Visual Studio runtime is needed for development work starting with this new version.

### 2.1.2. Application functionality for network configuration

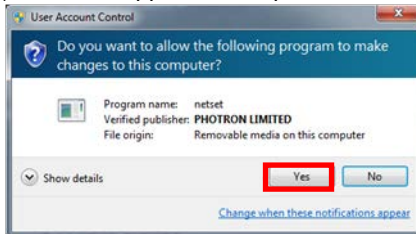
I. Newly added application functionality for network configuration

A) Start-up flow

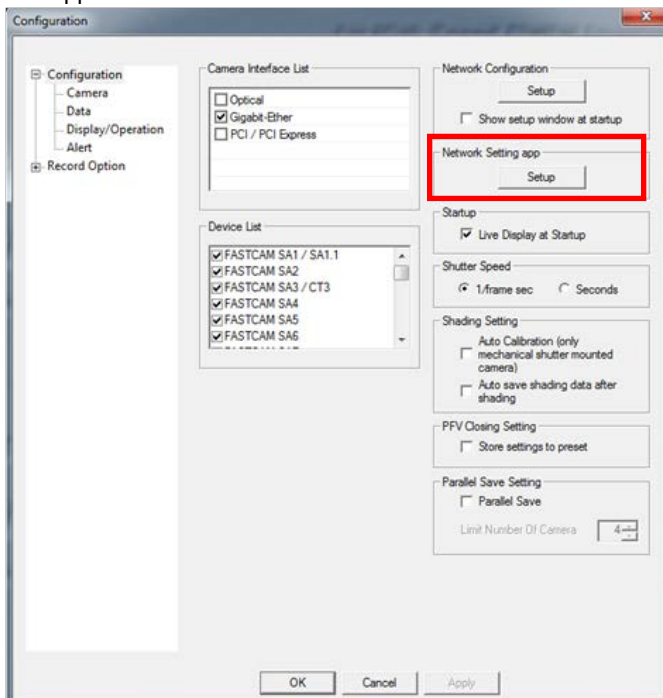
If no camera is detected during start-up of the PFV, a message is displayed as shown below:



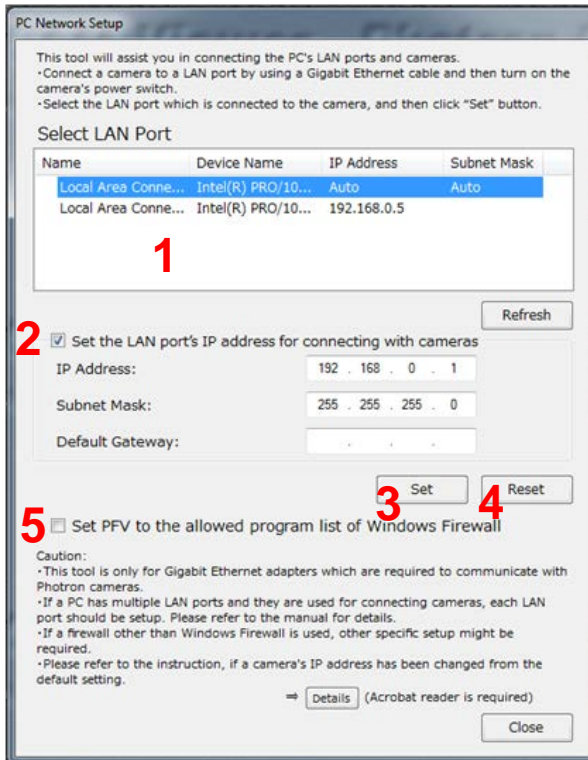
When you click [Yes], the below confirmation screen is displayed. (Note: This application requires administrative right.)



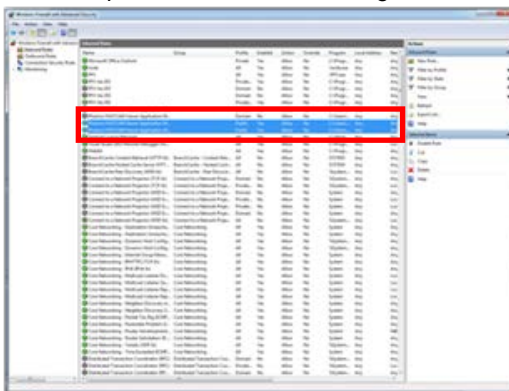
The application can also be started from the environment configuration window.



## B) Behavior of application

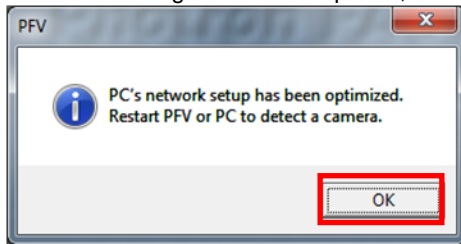


1. Select an adapter to set up.
2. For [Set the LAN port's IP address for connecting to cameras]:
  - When checked ON, enter IP address, subnet mask and gateway as necessary.
  - When checked OFF, use DHCP connection, not IP address or others.
3. When the reset button is clicked, IP address and other parameters return to the status right after startup of the application.
4. When the checkbox is checked ON, an exceptional configuration is added, and it is deleted when checked OFF. At startup of the application, the exceptional configuration is forced to be set up, with the checkbox being automatically checked ON.



C) Completion of configuration

When configuration is completed, the below message is displayed:



Restart PFV or PC.



# Chapter.3 The Contents of Bug Fix

---

The following describes the contents of a bug fix.

### 3.1. PFV Ver.3.6.0 Fixed bugs

---

The following bugs have been fixed in the PFV Ver.3.6.0:

1. In the English version LabVIEW Samples, an error occurs when the Camera Option button is clicked.
2. When a Mini UX50/100 camera is set to Low Light, the brightness correctly gets to the level of 50 Hz, but, at the same time the shutter speed indication in [Live Information Display Window] (located in the upper left corner) erroneously turns to [1/faming speed set before Low Light].
3. If the maximum allowable number of double-byte characters is entered in text entry box in the drawing toolbar, the application is forced to shut down.
4. Japanese characters entered in text entry box in the drawing toolbar get corrupted.
5. In the Cycle Display Plug-in with the Frame tab set to Memory, Skip Save fails to turn ON when trying to save data by double-clicking the column title of the Cycle View.
6. When trying to exit the application after making one or more conversions with the Batch Data Conversion Plug-in, the system inevitably ends up in a forced shutdown condition.
7. An area selected in FTIF is automatically saved against the operator's intent to the contrary.
8. The PFV abnormally shuts itself down after about 15 minutes of playback operation of image data recorded together with IRIG data. This fault occurs in either memory playback or file playback.
9. In file playback operation, the PFV fails to display, right next to the Current Times, the number of triggers in Random/Random Reset Trigger mode.

# **Photron *FASTCAM Viewer***

***for High Speed Digital Imaging***

Release Notes, Ver.3.6.0 Revision 2015-1E

Publication Date            July, 2015  
Publisher                    PHOTRON LIMITED  
21F, Jimbocho Mitsui Bldg.,  
1-105 Kanda Jimbocho, Chiyoda-Ku, Tokyo 101-0051