

# HiSpec 3 Megapixel Images at 1,000 FPS



## Fast Facts

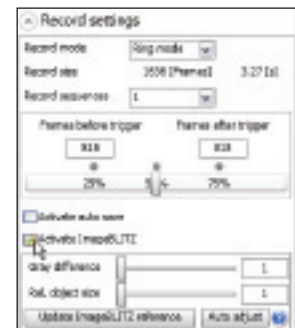
- **Outstanding Image Quality:** Up to 1,000 frames per second at 1280 x 1024 resolution
- **Extremely Fast:** Stepless adjustable frame rate up to 93,000 frames per second
- **Well Connected:** GiGE compatible for easy remote camera control
- **Fits Anywhere:** Only 69mm H x 93mm W x 92mm D, C-Mount and .9 kg.
- **GiGE Vision:** Industry standard control interface



Easy to use  
Camera Control  
Software



ImageBLITZ® Auto  
Trigger feature  
based on selectable  
region of interest



## Key Features

- **Optional ImageBLITZ® Auto Trigger** – Now it's easy to capture those elusive random events. Simply define a "region of interest" in the field of view and let the ImageBLITZ® trigger take over. Any change in the pre-set image area will stop the recording and save the event sequence. No special hardware or intrusive wiring is required.
- **Optional Hi-G Configuration** - The HiSpec 3 has been certified to 100 "G" accelerations making it the ideal combination of ruggedness with small size. Fits into tight spaces for on-board automotive impact testing, military ordinance testing and other harsh environments. The built-in battery operates in three modes:
  - Ensures fail-safe operation in the event of a power loss
  - Allows "untethered" operation for up to 1 hour
  - Has image retention mode of up to 24 hours
- **Use it Everywhere** – The HiSpec 3's Gigabit Ethernet interface allows the user to operate multiple cameras from any standard Notebook / PC up to a distance of 100 meters. The HiSpec 3 is designed for easy operation in virtually any industrial or laboratory environment.

See what you've been missing


# Fastec HiSpec3

## Camera Specifications

### Standard Features

<b>System Design</b>	Scaleable and network-compatible with standard and/or notebook PCs Synchronous processing of multiple cameras
<b>Sensor</b>	CMOS sensor, 1280 x 1024 pixels, 8-bit monochrome or RGB color with BAYER filter Active pixel area 19.7mm diagonal
<b>Pixel Size</b>	12 x 12 $\mu$ m
<b>Power Consumption</b>	15W maximum
<b>Spectral Bandwidth</b>	400 - 800 nm
<b>Recording Rate</b>	Up to 1,000 fps at full resolution, up to 93,282 fps at reduced resolution
<b>Image Memory</b>	4GB standard. Optional upgrade to 8GB
<b>Recording Time</b>	1.5 seconds at full resolution. Longer record times with variable resolution and frame rates
<b>Shutter</b>	Global electronic shutter from 2 $\mu$ sec to 1 second
<b>Lens Mount</b>	C-Mount, F-Mount optional
<b>Frame Format</b>	BMP, TIF, DNG, JPG or AVI file format
<b>Camera / PC Interface</b>	1000/100 Ethernet interface (Gigabit Ethernet)
<b>Phase Lock</b>	Multiple cameras can be synchronized to a master camera or to an external source such as optional IRIG-B
<b>Trigger</b>	Contact closure, external TTL signal or software trigger (ImageBLITZ® Auto Trigger)
<b>Camera Size</b>	69mm H x 93mm W x 93mm D with C-Mount 63mm H x 93mm W x 128mm D with F-Mount
<b>Camera Weight</b>	.9 kg. without lens
<b>Operating Environment</b>	+ 5° to + 45°C
<b>Power Supply</b>	10.5 - 24V DC external power supply

### Software Specifications

<b>Camera Control Software</b>	HiSpec Director 2 software for Windows 7/Vista/XP
<b>Optional SDK</b>	GiGE Vision compatible 

### Options Available

<b>Memory</b>	8GB
<b>Auto Trigger</b>	ImageBLITZ® Software – Auto Trigger
<b>Multi-Sequence Mode</b>	2, 4, 8 or 16 individual recording partitions
<b>IRIG-B</b>	Range timing standard
<b>Hi-G Certified</b>	Certified for shock to 100g for 25ms, vibration to 10g
<b>F-Mount Adapter</b>	Convert from C-Mount lenses to F-Mount lenses
<b>Phoenix Interface Plug</b>	Industrial standard Phoenix interface plug

### Sample Frame Rates and Resolutions

Maximum Frame Rate	Resolution	4GB Standard		8GB Option	
		Recording Time @ Maximum Frame Rate	Total Frames	Recording Time @ Maximum Frame Rate	Total Frames
1,000 fps	1280 x 1024	1.5 sec	1,500	3 sec	3,000
2,000 fps	1280 x 512	1.5 sec	3,000	3 sec	6,000
5,000 fps	1280 x 204	1.5 sec	7,500	3 sec	15,000
7,000 fps	1280 x 146	1.8 sec	12,450	3.6 sec	24,900
10,000 fps	1280 x 102	1.5 sec	15,000	3 sec	30,000