

# HiSpec Lite Innovative Low-Light High-Speed Camera

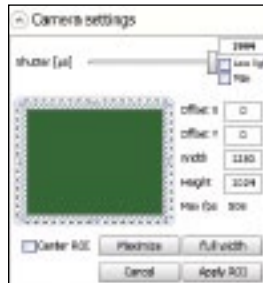


### Fast Facts

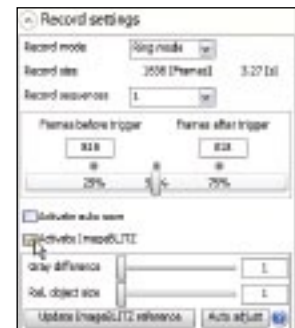
- **Excellent Light Sensitivity:** 3,200 ISO monochrome, 1,600 ISO color
- **Outstanding Image Quality:** Up to 1000 frames per second at 704 x 528 resolution
- **Well Connected:** GiGE compatible for easy remote camera control
- **Fits Anywhere:** Only 63mm H x 63mm W x 65mm D and .28 kg
- **GiGE Vision:** Industry standard control interface



Easy to use  
 FASTEC Director 2  
 Software



Optional Image-  
 BLITZ® Auto  
 Trigger feature  
 based on selectable  
 region of interest



## Key Features

- **Forget About Bright Lights** – Until now, lighting has sometimes been a challenge with high-speed imaging. No more! The photo-sensitivity of the HiSpec Lite enables high speed recordings at VGA resolutions under normal lighting conditions.
- **Use it Everywhere** – The HiSpec Lite Gigabit Ethernet interface allows the user to operate multiple cameras from any standard Notebook / PC up to a distance of 100 meters. The HiSpec Lite is designed for easy operation in virtually any industrial or laboratory environment.

See what you've been missing

# Fastec HiSpec Lite

## Camera Specifications

### Standard Features

**System Design**

Scaleable and network-compatible with standard and/or notebook PCs  
Synchronous processing of multiple cameras

**Sensor**

CMOS sensor, 704 x 528 pixels, 10-bit monochrome or RGB color with BAYER filter  
Active pixel area 12.3mm diagonal

**Pixel Size**

14 x 14  $\mu$ m

**Light Sensitivity**

3,200 ISO monochrome, 1,600 ISO color

**Spectral Bandwidth**

400 - 900 nm

**Record Rate**

Up to 1000 fps at full resolution

**Image Memory**

2GB, Optional upgrade to 4GB.

**Recording Time**

5.8 seconds at full resolution

Longer record times with variable resolution and frame rates

**Shutter**

Global electronic shutter from 2 $\mu$ sec to 1second

**Lens Mount**

C-Mount

**Frame Format**

BMP, TIF, DNG, JPG or AVI file format

**Camera / PC Interface**

1000/100 Ethernet interface (Gigabit Ethernet)

**Phase Lock**

Multiple cameras can be synchronized to a master camera or to an external source

**Trigger**

Contact closure, external TTL signal or software trigger (ImageBLITZ® Auto Trigger)

**Camera Size**

63mm H x 63mm W x 65mm D with C-Mount lens.

63mm H x 63mm W x 92.5mm D with F-Mount lens

**Camera Weight**

.28 kg. without lens

**Operating Environment**

+5° to +35°C (to +45° with cooling option)

**Power Supply**

10 - 30V DC external power supply

**Power Consumption**

7.5W maximum

### Software Specifications

**Camera Control Software**

HiSpec Director 2 software for Windows 7/ Vista / XP

**Image Amplification**

Digital gain from 1 to 4 in 8 steps

**Optional SDK**

GiGE Vision compatible 

### Options Available

**Memory**

4GB

**Auto Trigger**

ImageBLITZ®

**Multi-Sequence Record Mode**

2, 4, 8 or 16 individual recording partitions

### Sample Frame Rates and Resolutions

Maximum Frame Rate	Resolution	2GB Standard		4GB Option	
		Recording Time @ Maximum Frame Rate	Total Frames	Recording Time @ Maximum Frame Rate	Total Frames
250 fps	320 x 240	111.84 sec.	27,960	223.7 sec	55,920
500 fps	320 x 240	55.92 sec.	27,960	111.8 sec	55,920
1,000 fps	320 x 240	27.96 sec.	27,960	55.9 sec	55,920
250 fps	704 x 528	23.1 sec.	5,780	46.2 sec	11,560
500 fps	704 x 528	11.6 sec.	5,780	23.1 sec	11,560
1,000 fps	704 x 528	5.8 sec	5,780	11.6 sec	11,560