

FASTEC IL4

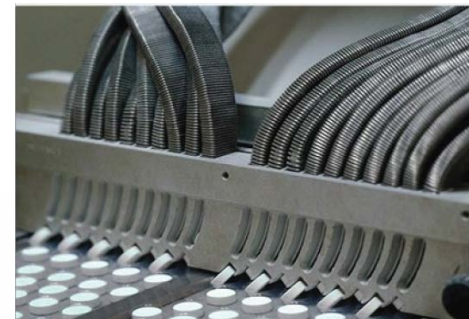
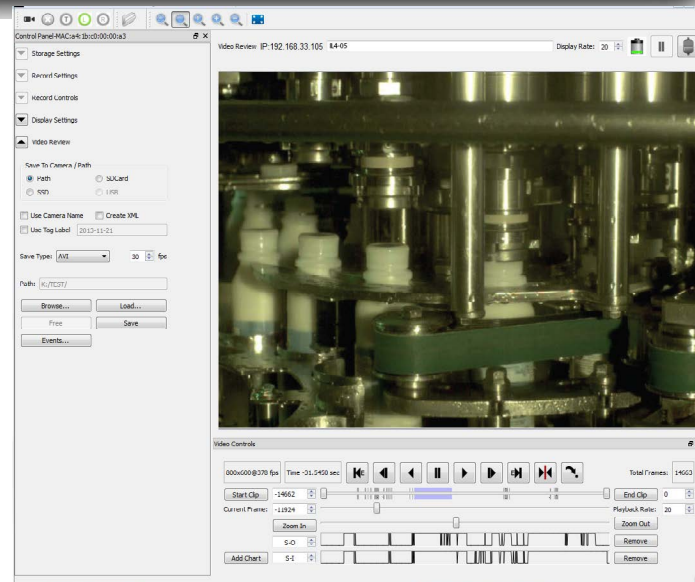


IL4 At A Glance

- Long Record and Burst Mode in one camera!
- 1280 x 1024 CMOS 510 fps sensor
- Full resolution : 365 fps to on-board SSD (SATA III option)
- Multiple storage options
- Control via powerful FasMotion Software on PC or Mac or via built-in web interface

Key Features

- **Burst Mode: Classic High-Speed Imaging** – The IL4 records ultra-sharp 1280 x 1024 mono or vivid color images at over 500 frames per second to 8GB of image memory.
- **Long Record Mode** – with recording speeds of up to 365 frames per second at full resolution and 1541 fps at VGA resolution (SATA III option) to the built-in SSD, the Fastec IL4 lets you see what you have been missing with standard video. Unlike traditional high-speed camera systems, which only record for a few seconds and require careful triggering, the Fastec IL4 can record continuously at high speed for many minutes, or hours at reduced resolutions.
- **FasFire Mode** – Ultra-fast save times to an SSD or SD card **while recording** high-speed bursts of hundreds or even thousands of images at a time, the IL4 is always ready for the next high-speed snapshot!
- **Flexible Control** - The IL4 can be controlled over Gigabit Ethernet via Fastec FasMotion software on your PC or Mac or via the built-in web interface with your favorite web browser on your PC, Mac, tablet, or even your smartphone.
- **Multiple Storage Options** – The IL4 features both a USB port and an SD port for quick and easy image downloads to USB flash drives, SD cards, or portable hard drives. The built-in SSD (solid state drive) provides 256GB or 512GB of lightning-fast non-volatile internal storage.
- **High-Performance Image Transfer** – The FasMotion application makes workflow a breeze with transfers of uncompressed images via Gigabit Ethernet at rates of 50–80MB/s to moderately equipped PCs.



Fastec IL4 Specifications

Standard Features

Operating Modes	Burst mode (record to high-speed memory), Long Record mode (record to SSD)
Sensor	10-bit CMOS sensor with 14µm square pixel, color or monochrome
Resolution	1280 x 1024 pixel maximum
Light Sensitivity	3,200 ISO monochrome, 1,600 ISO color
Record Rate	24 to 500 fps at 1280 x 1024, over 60,000 fps at reduced resolutions
Shutter	Global electronic shutter from 2µsec to 41.667ms
Session Length	256MB to 8GB in Burst Mode, or up to full SSD size in Long Record mode
Built-In Storage	Solid State Drive (SSD): 256GB SATA II
Image Memory	8GB
File Formats	Stacks – BMP, DNG, JPEG, TIFF (processed or raw); Video – AVI, CAP (raw)
Still Image Format	JPEG
Removable Storage	SDHC SD card (32GB maximum), USB flash drive
Lens Mount	C-mount, F-mount, or PL-mount
Communication Ports	USB 2.0 device (micro-B), Ethernet (10/100/1000Base-T)
Control Software	FasMotion (PC/Mac application), web interface (browser on all platforms)
Six External I/O Ports	Markers, Trigger In/Out, Sync In/Out, Arm In/Out (LVTTTL (3.3V) or switch closure)
Marker Data Views	FasMotion playback timeline and o-scope mode, XML file
Video Out	HDMI (1080P, 720P, 480P)
Construction	Anodized machined aluminum housing
Power	10-26v @ 20W (max). Universal power supply included
Operating Environment	+5°C to +50°C
Size and Weight	184mm W x 112mm H x 40mm D. 1Kg (2.2 lbs.).

Optional Features

WiFi	802.11 b/g/n, security: open, WEP, WPA(2) - PSK
Lens Mounts	F-Mount, PL-Mount
Built-In Storage	Solid State Drive: 512GB SATA II, 256GB or 512GB SATA III

Sample Record Rates and Times

Burst Mode 8GB Image Memory	
Resolution	Time@ fps
1280 x 1024	12.8sec @ 510fps
1280 x 1024	26.1sec @ 250fps
1280 x 720	12.8sec @ 725fps
800 x 600	14.2sec @ 1250fps
640 x 480	14.2sec @ 1950fps
512 x 512	16.3sec @ 2000fps
416 x 312	16.1sec @ 4000fps
364 x 274	17.0sec @ 5000fps
230 x 170	21.4sec @ 10000fps

Long Record Mode			
Resolution	SATA II / III	256GB SSD	512GB SSD
		Time@ FPS	Time@ FPS
1280 x 1024	III (max rate)	7.5min @ 365fps	15min @ 365fps
1280 x 1024	II (max rate)	15min @ 182fps	30min @ 182fps
1280 x 720	III (max rate)	7.5min @ 518fps	15min @ 518fps
1280 x 720	II (max rate)	15min @ 259fps	30min @ 259fps
640 x 480	III (max rate)	7.5min @ 1541fps	15min @ 1541fps
640 x 480	II (max rate)	15min @ 770fps	30min @ 770fps
480 x 480	III (max rate)	7.5min @ 2055fps	15min @ 2055fps
480 x 480	II (max rate)	15 min @ 1027fps	30 min @ 1027fps
480 x 480		1 hour @ 250fps	2 hour @ 250fps

All specifications subject to change.

Record times calculated for 8-bit pixel depth.