

IL3-100LS



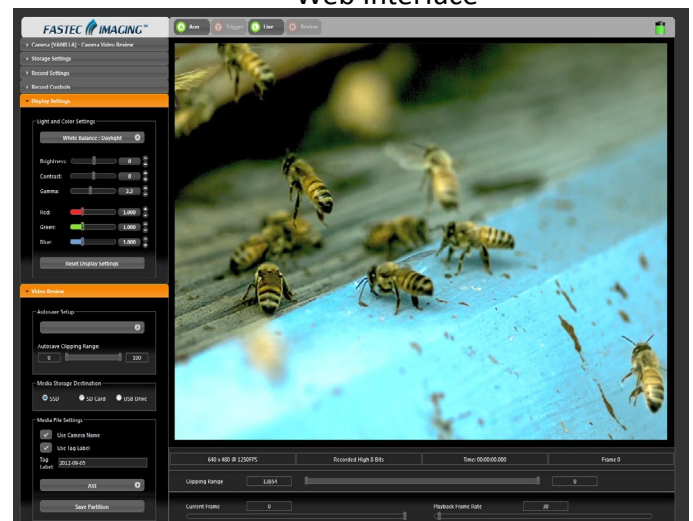
IL3-100LS At A Glance

- 1280 x 1024 at 500 fps CMOS sensor
- Multiple removable image storage options
- Up to 256GB of onboard image storage
- Camera control via built-in web interface or FasMotion PC application

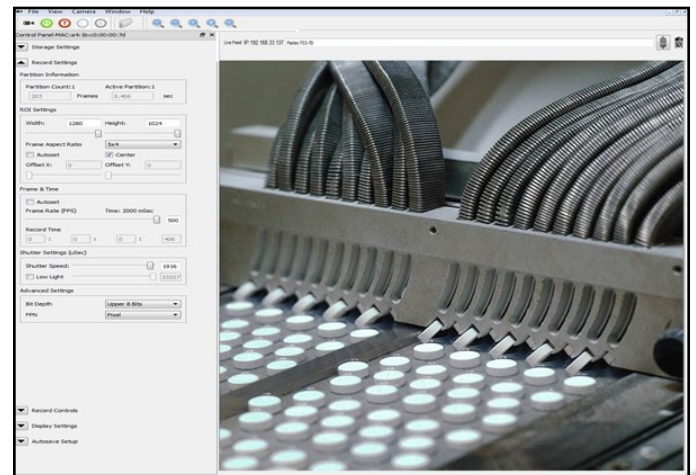
Key Features

- **High-Resolution, High-Speed Images** – The IL3-100LS records 1280 x 1024 ultra-sharp mono or vivid color images at 500 frames per second, opening a world of events too fast for the human eye to see.
- **Flexible Control** - The IL3 can be controlled over Gigabit Ethernet via Fastec FasMotion software on your PC or via the built-in web interface with your favorite web browser on your PC, Mac, tablet, or even your smartphone.
- **Multiple Storage Options** – The IL3 features both a USB port and an SD port for quick and easy image downloads to USB flash drives, SD cards, or portable hard drives. An optional built-in SSD (solid state drive) provides for up to 256GB of lightning-fast non-volatile internal storage. Shoot all day long without having to download to a computer.
- **High-Performance Image Transfer** – With download rates of about 8GB per minute to the optional internal SSD, or just seconds for short clips, you will always be ready to take the next shot with the IL3! The FasMotion application makes workflow a breeze with transfers of uncompressed images via Gigabit Ethernet at rates of 50–80MB/s to moderately equipped PCs.

Web Interface



FasMotion



Fastec IL3-100LS

Specifications

Standard Features

Sensor	10-bit CMOS sensor with 14µm square pixels, color or monochrome
Resolution	1280 x 1024 pixels maximum
Light Sensitivity	3,200 ISO monochrome, 1,600 ISO color
Record Rate	24 to 500fps at 1280 x 1024
Shutter	Global electronic shutter from 2µsec to 41.667ms
Image Memory	4GB. Optional upgrade to 8GB
Removable Storage	SD card (SDHC: 32GB maximum), USB Flash drive
Session Length	256MB up to full image memory
File Formats	Stacks – BMP, DNG, JPEG, TIFF (processed or raw); Video – AVI, CAP (raw)
Still Image Format	JPEG
Lens Mount	C-Mount (standard), F-Mount or PL-Mount (optional)
PC Communication Ports	USB 2.0 device (Micro-B), Ethernet (10/100/1000Base-T)
Control Software	FasMotion (PC application), web interface (browser on all platforms)
External I/O Sync	Trigger In/Out, Sync In/Out, Arm In/Out (LVTTTL (3.3V) or switch closure)
Video Out	HDMI (1080P, 720P, 480P)
Construction	Anodized machined aluminum housing
Power	10-26VDC external power supply
Power Consumption	20W maximum
Operating Environment	+5°C to +50°C
Size and Weight	185mm (7.25”) W x 112mm (4.4”) H x 45.5mm (1.8”) D. 1Kg (2.2 lbs)

Optional Features

WiFi	802.11 b/g/n, security: open, WEP, WPA(2) - PSK
Image Memory	Upgrade to 8GB total
Built-In Storage	Solid State Drive (SSD) 64GB, 128GB or 256GB
Lens Mounts	F-Mount, PL-Mount

Sample Frame Rates and Resolutions

Frame Rate Rate: fps	Resolution		4GB Capacity		8 GB Capacity	
	H.	V.	Time: sec.	Frames	Time: sec.	Frames
125	1280	1024	25.9	3240.0	52.1	6517
250	1280	1024	13.0	3240.0	26.1	6517
500	1280	1024	6.5	3240.0	13.0	6517
125	1280	720	36.9	4608.0	74.2	9269
250	1280	720	18.4	4608.0	37.1	9269
500	1280	720	9.2	4608.0	18.5	9269
125	800	600	70.8	8848.0	142.4	17796
250	800	600	35.4	8848.0	71.2	17796
500	800	600	17.7	8848.0	35.6	17796

Record times and frames calculated for 8-bit pixel depth.