

IL3-100L



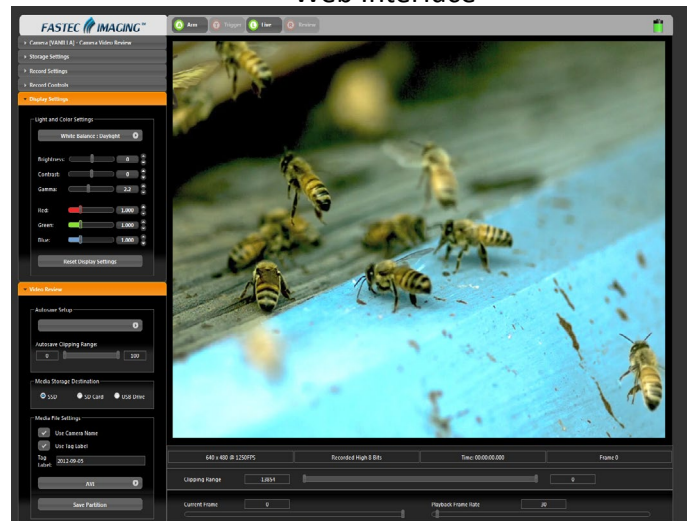
IL3-100L At A Glance

- 800 x 600 at 1250 fps CMOS sensor
- Multiple removable image storage options
- Up to 256GB of onboard image storage
- Camera control via built-in web interface or FasMotion PC application

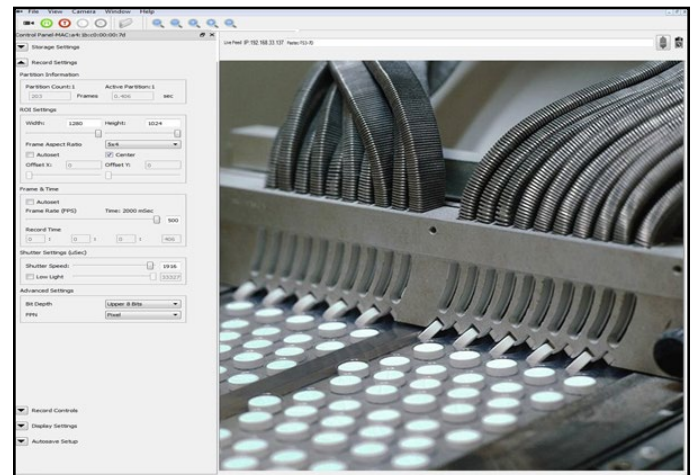
Key Features

- **High-Speed Images** – The IL3-100L records 800 x 600 mono or color images at 1250 frames per second, opening a world of events too fast for the human eye to see.
- **Flexible Control** - The IL3 can be controlled over Gigabit Ethernet via Fastec FasMotion software on your PC or via the built-in web interface with your favorite web browser on your PC, Mac, tablet, or even your smartphone.
- **Multiple Storage Options** – The IL3 features both a USB port and an SD port for quick and easy image downloads to USB flash drives, SD cards, or portable hard drives. An optional built-in SSD (solid state drive) provides for up to 256GB of lightning-fast non-volatile internal storage. Shoot all day long without having to download to a computer.
- **High-Performance Image Transfer** – With download rates of about 8GB per minute to the optional internal SSD, or just seconds for short clips, you will always be ready to take the next shot with the IL3! The FasMotion application makes workflow a breeze with transfers of uncompressed images via Gigabit Ethernet at rates of 50–80MB/s to moderately equipped PCs.

Web Interface



FasMotion



Fastec IL3-100L

Specifications

Standard Features

Sensor	10-bit CMOS sensor with 14µm square pixels, color or monochrome
Resolution	800 x 600 pixels maximum
Light Sensitivity	3,200 ISO monochrome, 1,600 ISO color
Record Rate	24 to 1250fps at 800 x 600
Shutter	Global electronic shutter from 2µsec to 41.667ms
Image Memory	4GB. Optional upgrade to 8GB
Removable Storage	SD card (SDHC: 32GB maximum), USB Flash drive
Session Length	256MB up to full image memory
File Formats	Stacks – BMP, DNG, JPEG, TIFF (processed or raw); Video – AVI, CAP (raw)
Still Image Format	JPEG
Lens Mount	C-Mount (standard), F-Mount or PL-Mount (optional)
PC Communication Ports	USB 2.0 device (Micro-B), Ethernet (10/100/1000Base-T)
Control Software	FasMotion (PC application), web interface (browser on all platforms)
External I/O Sync	Trigger In/Out, Sync In/Out, Arm In/Out (LVTTTL (3.3V) or switch closure)
Video Out	HDMI (1080P, 720P, 480P)
Construction	Anodized machined aluminum housing
Power	10-26VDC external power supply
Power Consumption	20W maximum
Operating Environment	+5°C to +50°C
Size and Weight	185mm (7.25") W x 112mm (4.4") H x 45.5mm (1.8") D. 1Kg (2.2 lbs)

Optional Features

WiFi	802.11 b/g/n, security: open, WEP, WPA(2) - PSK
Image Memory	Upgrade to 8GB total
Built-In Storage	Solid State Drive (SSD) 64GB, 128GB or 256GB
Lens Mounts	F-Mount, PL-Mount

Sample Frame Rates and Resolutions

Frame Rate	Resolution		4GB Capacity		8 GB Capacity	
	H.	V.	Time: sec.	Frames	Time: sec.	Frames
Rate: fps						
125	800	600	70.8	8,848	142.4	17,796
250	800	600	35.4	8,848	71.2	17,796
500	800	600	17.7	8,848	35.6	17,796
1000	800	600	8.8	8,848	17.8	17,796
1250	800	600	7.1	8,848	14.2	17,796
125	640	480	110.6	13,825	222.6	27,825
250	640	480	55.3	13,825	111.3	27,825
500	640	480	27.7	13,825	55.7	27,825
1000	640	480	13.8	13,825	27.8	27,825
1250	640	480	11.1	13,825	22.3	27,825

Record times and frames calculated for 8-bit pixel depth.