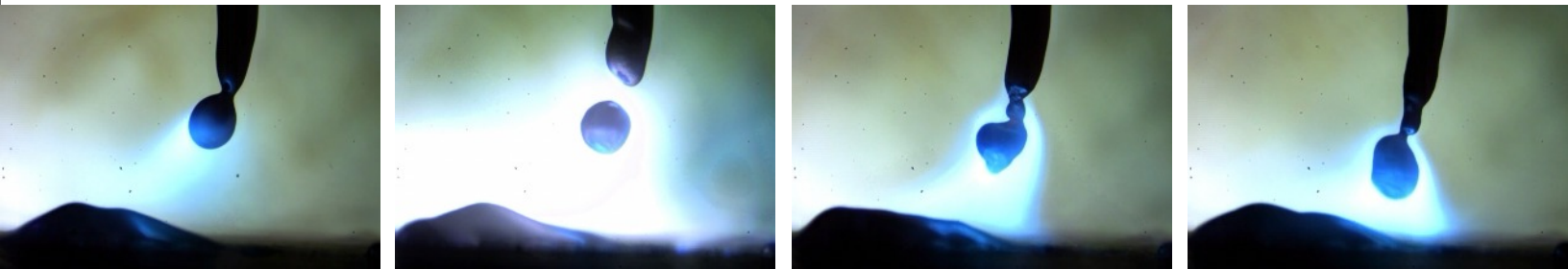


FASTCAM Mini UX100



Size Need Not Compromise Performance

The Photron FASTCAM Mini UX100 high speed camera provides real high speed performance and power from a small package, delivering 1,280 by 1,024 pixel resolution to 4,000 frames per second (fps) and reduced resolution operation all the way to 800,000 fps, with 720 HD resolution to 6,400 fps. This makes the UX100 a small and lightweight camera ideally suited for applications as varied as sports, life sciences or ballistic testing.

A global shutter, operating as fast as one microsecond, provides blur free imagery from the 12-bit pixel depth (36-bits for the color version), digital CMOS sensor. The 10 μ m square pixels provide ISO 12232 Ssat certified light sensitivity of 8,000 ISO monochrome, and 4,000 for the 36-bit color version.

The Mini UX100 is supplied with both F-mount (G-type lens compatible) and C-mount lens mounts, with readily available one inch format C-mount lenses providing complete sensor coverage at full resolution.

APPLICATIONS

- Life sciences
- Welding
- Off board automotive
- Fluidics

BENEFITS

- Self-contained, compact and lightweight camera 120mm W x 120 mm H x 90 mm D (excluding lens and mount) and 1.5 Kg makes positioning your camera easy regardless of where you need it.
- Powerful performance with many usable resolution and speed combinations, including:
 - 1,280 pixels horizontal by 1,024 pixels vertical resolution to 4,000 frames per second (fps).
 - 1,280 x 1,000 up to 5,000 fps.
 - 720 (1,280 x 720) HD resolution to 6,400 fps.
 - Reduced resolution operation to 800,000 fps.
- Global electronic shutter down to 1 μ s to freeze the fastest motion without blur.
- Available with three onboard memory options:
 - 4GB
 - 8GB
 - 16GB



Photron
High Speed Cameras

FASTCAM Mini UX100



Partial Resolution - Frame Rate - Record Time

H x V Image Resolution	Frame Rate (fps)	Record Time (Sec.)		
		4 GB	8 GB	16 GB
1,280 x 1,024	4,000	0.55	1.09	2.18
1,280 x 1,000	5,000	0.45	0.89	1.79
1,280 x 720	6,400	0.49	0.97	1.94
1,280 x 624	8,000	0.45	0.9	1.79
1,280 x 248	20,000	0.45	0.9	1.8
1,280 x 24	200,000	0.47	0.93	1.86
1,024 x 576	8,192	0.59	1.19	2.37
896 x 720	6,400	0.69	1.39	2.77
896 x 496	10,000	0.64	1.29	2.58
768 x 768	6,400	0.76	1.52	3.03
768 x 512	8,192	0.89	1.78	3.56
640 x 480	10,240	0.91	1.82	3.64
640 x 320	12,500	1.12	2.24	4.47
640 x 8	800,000	0.7	1.4	2.8

Pixel size	10µm square
Bit depth (ADC)	12-bits
Memory Partitions	Up to 64 separate memory partitions available
Digital Interface	Gigabit Ethernet
I/O	Input: Trigger TTL and Switch, Sync, Ready, Event and IRIG. Output: Trigger, Sync, Ready, Event
External Sync	+/- TTL 5 V peak to peak variable Frequency Synchronization
Minimum Shutter Speed	1.0µs global shutter dependent on frame rate
Lens Mount	F-Mount (G-type lens compatible) and C-Mount
Trigger Mode	Start, Center, End, Manual, Random
DC Power	22 to 32 V, 40 VA (AC PSU 100 ~ 240 V, 50 ~ 60 Hz supplied)
Operating temperature	0°C to 40°C /85% or less (non condensing)
Dimensions and Weight	120 mm x 120 mm x 90 mm and 1.5 Kg

Photron
High Speed Cameras

9520 Padgett Street
Suite 110
San Diego, California 92126

Tel. +1 858-684-3555
+1 800-585-2129

Email. Image@photron.com
Web. www.photron.com